

Government Center PVTC Technical Requirements

About the installation scenarios

This document describes the minimum hardware requirements to install the Pearson VUE Testing System (VTS) software in a Pearson VUE Authorized Test Center. The VTS software may be installed in one of two configurations: **Workgroup scenario** or **Server scenario**. Whichever scenario is installed, the hardware and software must meet Pearson VUE's minimum requirements as shown in the [System requirements](#) on page 4.



Warning

If your site is installing in a **Workgroup scenario** you are limited to no more than 15 exam delivery workstations. If you are installing on more than 15 exam delivery workstations you must use a **Server scenario**, which requires a **Windows server OS**.

The following items are strictly prohibited:

- **Mac** hardware running any operating system
- **Virtual environments** in any form
- **Laptops as exam delivery** workstations or as **Servers**

Any Windows user account that interacts with the VTS software on the **Server, Administration, Proctor, or exam delivery workstation** is **required** to have **local administrator rights** on that workstation. This includes both installing and running the VTS software.

Workgroup scenario installation

In a Workgroup scenario installation, exam delivery workstations are connected through a local area network (LAN) or workgroup to the Administration workstation which provides shared file storage. This is illustrated below.

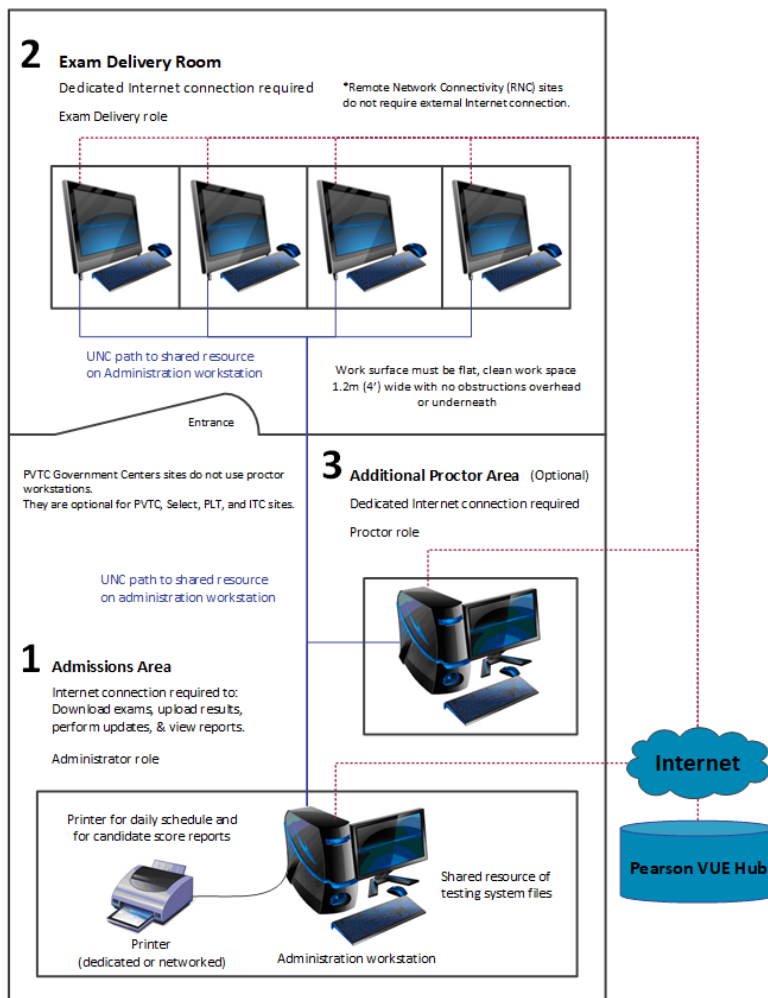


Warning

A Workgroup scenario may only use up to 15 exam delivery workstations. If you will be installing more than 15 workstations, you must use a Server scenario shown on the following page.

Workgroup Scenario

Multiple computers workgroup/network



Server scenario installation

In a Server scenario installation, all exam delivery workstations are connected through a LAN, and a file server provides shared file storage. This is illustrated below. (Server scenario refers to a setup type and is not related to an Operating System.)

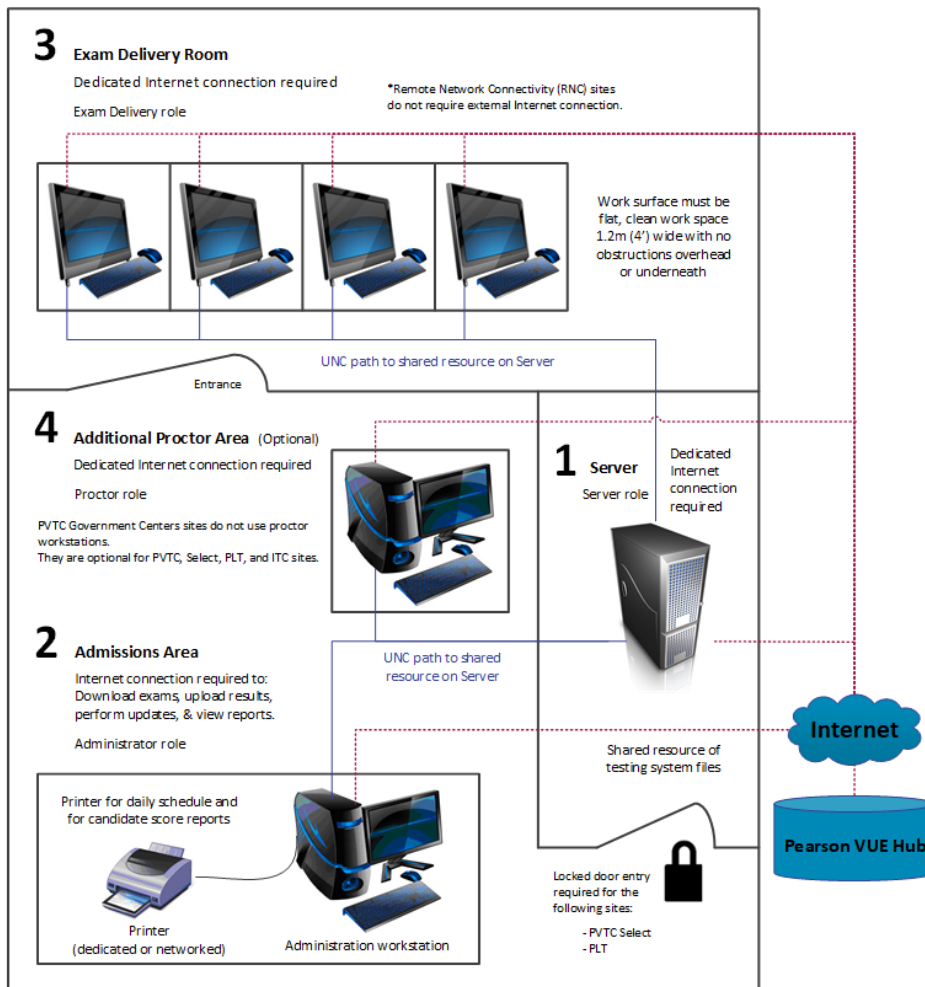


Warning

You must use a **Server scenario** if you have more than **15 exam delivery workstations**. A server operating system, such as Server 2019 or 2016, is required for more than 15 exam delivery workstations.

Server Scenario

Multiple computers
local area network (LAN)



Government Center PVTC Technical Requirements

System requirements

Effective **March 1, 2024**, the following pages list the minimum system requirements for installing and running the Pearson VUE Testing System, and for operating as a test center. **Pearson recommends purchasing equipment that meets or exceeds the Recommended Specifications.** The minimum requirements will change periodically based on the needs of our exam sponsors.

Hardware configuration

All-in-one PC's are permitted if they meet the minimum Technical Specification and the Touch screen is disabled. Pearson VUE highly recommends that All-in-one PC's meet the Recommended Technical Specifications.

Software licenses

All test centers must have Windows operating systems that have completed online activation. Application software installed on all exam delivery workstations must also have current licensing. Windows Operating Systems must pass Genuine Windows Validation. Evaluation copies are not supported.

Network configuration

Pearson VUE **strongly recommended** that all machines with VTS Software installed remain in the same domain or workgroup, VLAN, and subnet. Network configurations that do not follow this guideline may experience decreased exam delivery performance. You may be asked to make changes to your network configuration to comply with these guidelines as part of problem resolution.

Internet bandwidth

The minimum connection speed (Base Network) requirement of 5.0 Mbps down/ 3.0 Mbps up is required for all test centers. Some exam deliveries require an internet connection. For Internet Based Tests (IBT), internet requirements depend on the number of delivery workstations. See the table below for details.

BASE NETWORK BANDWIDTH + 512 Kbps FOR EACH EXAM DELIVERY WORKSTATION	
1 – 15 delivery workstations	5.0 Mbps down/ 3.0 Mbps up base and 512 Kbps up/down for each workstation
16 – 50 delivery workstations	10.0 Mbps down/ 5.0 Mbps up base and 512 Kbps up/down for each workstation
50 – 100 delivery workstations	20.0 Mbps down/ 10.0 Mbps up base and 512 Kbps up/down for each workstation

For IBT exam deliveries, latency should not exceed 150 ms

24" Monitors – exam delivery

All test centers are required to use 24" monitors.

REQUIREMENTS	
Monitor	<ul style="list-style-type: none"> • Must allow for the following display resolution settings and be set to the highest resolution: <ul style="list-style-type: none"> ○ 1920 x 1080 (set to this resolution) ○ 1280 x 1024 ○ 1024 x 768 • Monitor must be connected to the computer using DVI, DisplayPort, or HDMI
Desktop graphics adapter	<ul style="list-style-type: none"> • Exam delivery workstations must have a graphics adapter that supports GPU Scaling (ability to Maintain Aspect Ratio) • Exam delivery workstations must have the GPU Scaling feature enabled in the graphics adapter software • The latest version of graphics drivers must be installed

Pearson VUE specific hardware

Some exams may require test center admissions equipment. Please consult with your Pearson VUE representative to determine if these components are required for your test center. If required, these components may be purchased from Pearson VUE or a third-party source.


REQUIREMENT	ADMINISTRATION WORKSTATION
Web camera	Logitech HD Webcam C615, or Logitech Pro C920 Pro HD Webcam, or Logitech C920e Business Webcam
Signature device	ePadLink: ePad Signature Pad – Model VP9801 or ePadLink: ePad II Signature Pad – Model VP9851




Warning

Pearson VUE strongly recommends purchasing 2 web cameras. If the first camera breaks down, you will not be able to deliver any more exams until a replacement is in place.


Administration and proctor workstations

	MINIMUM REQUIRED	RECOMMENDED SPECIFICATIONS
Operating System	<p>*Windows 10 Professional or Enterprise (64-bit mandatory)</p> <p>*Windows 11 Professional or Enterprise 10th generation or higher (64-bit mandatory)</p> <p>*If you are using Windows 10 or 11, you must have the latest version OS with all patches installed. You should run monthly updates for any OS updates.</p> <p>**Windows 10 support ends October 2025.</p>	
	<p> Note: If you are an educational facility, i.e., University, Windows 10 education is currently supported.</p>	
Processor	Intel: i5 Generation 4 or higher i3 Generation 8 or higher AMD: Ryzen 3 Generation 5 or higher	Intel: i7 Generation 2 or higher AMD: Ryzen 5 or higher
	<p>*Please refer to the Microsoft website to ensure the i3/i5/i7 or Ryzen 3/5 processor is compatible with Windows 11.</p>	
RAM	8 GB of RAM	16 GB of RAM or more
Hard drive	128 GB free disk space	
Graphics adapter	Video Adapter must support DirectX 12 or later with WDDM 2.0 driver or higher. Latest drivers installed.	
	<p>128 MB of dedicated Video RAM or the ability to increase the dedicated video memory to 128 MB via bios change.</p> <p>All computers and monitors should be connected via DVI, DisplayPort, or HDMI.</p>	
Display	24" monitor	
Mouse & keyboard	<ul style="list-style-type: none"> English QWERTY Keyboard 2 Button Wheel Mouse 	


Government Center PVTC Technical Requirements

	MINIMUM REQUIRED	RECOMMENDED SPECIFICATIONS
USB ports	4 available USB 2.0 ports for: <ul style="list-style-type: none"> English QWERTY Keyboard 2 Button Wheel Mouse Signature Pad admissions equipment Camera admissions equipment (if camera & signature required) 	6 available USB 2.0 ports for: <ul style="list-style-type: none"> English QWERTY Keyboard 2 Button Wheel Mouse Signature Pad admissions equipment Camera admissions equipment 2 spare ports
Network connection	100 Mbps Full Duplex WIRED connection to the network switch.	1 Gbps Full Duplex WIRED connection to the network switch.
	Strongly Recommended: All machines with VTS Software installed should remain in the same domain or workgroup, VLAN, and subnet.	
	 Warning: Wireless Networks are strictly prohibited. 3G/4G/5G connections are prohibited.	
Internet connection	See Internet bandwidth requirements above.	
Internet browser	Latest version of Edge, Chrome, or Firefox	
Printer	600 DPI Laser Printer	
Additional software	.NET 4.0 is installed with the VTS software.	
	If installing on Windows 10 , .NET 3.5 must be enabled on Administration/Proctor workstation to complete the VTS installation. All workstations must have Anti-Virus software installed with a current update.	
Additional notes	Windows 10 allows for up to 15 simultaneous exam deliveries.	
	Candidates must not have free access to the Administration or Proctor machines at any time. The Windows account used to install the VUE Testing System Platform must have Administrative rights to properly install and update the software.	

Exam delivery workstation

	MINIMUM REQUIRED	RECOMMENDED SPECIFICATIONS
Operating System	<p>*Windows 10 Professional or Enterprise (64-bit mandatory)</p> <p>*Windows 11 Professional or Enterprise 10th generation or higher (64-bit mandatory)</p> <p>*If you are using Windows 10 or 11, you must have the latest version OS with all patches installed. You should run monthly updates for any OS updates.</p> <p>**Windows 10 support ends October 2025.</p>	
	<p> Note: If you are an educational facility, i.e., University, Windows 10 education is currently supported.</p>	
Processor	<p>Intel: i5 Generation 4 or higher i3 Generation 8 or higher</p> <p>AMD: Ryzen 3 Generation 5 or higher</p>	<p>Intel: i7 Generation 2 or higher</p> <p>AMD: Ryzen 5 or higher</p>
	<p>*Please refer to the Microsoft website to ensure the i3/i5/i7 or Ryzen 3/5 processor is compatible with Windows 11.</p>	
RAM	8 GB of RAM	16 GB of RAM or more
Hard drive	128 GB free disk space	
Graphics adapter	<p>Video Adapter must support DirectX 12 or later with WDDM 2.0 driver or higher. Latest drivers installed.</p> <p>128 MB of dedicated Video RAM or the ability to increase the dedicated video memory to 128 MB via bios change.</p>	
	<p>All exam delivery workstations must have a Graphics Adapter that supports GPU Scaling (sometimes called Maintaining Aspect Ratio).</p> <p>All exam delivery workstations must have the GPU Scaling feature enabled.</p> <p>All computers and monitors must be connected via DVI, DisplayPort, or HDMI.</p>	
Display	See 24" Monitor requirements above.	
Audio	Windows compatible audio playback capability.	
Mouse & keyboard	<ul style="list-style-type: none"> English QWERTY Keyboard 2 Button Wheel Mouse 	


Government Center PVTC Technical Requirements

	MINIMUM REQUIRED	RECOMMENDED SPECIFICATIONS
USB ports	2 available USB 2.0 ports for: <ul style="list-style-type: none"> English QWERTY Keyboard 2 Button Wheel Mouse 	4 available USB 2.0 ports for: <ul style="list-style-type: none"> English QWERTY Keyboard 2 Button Wheel Mouse 2 spare ports
Network connection	100 Mbps Full Duplex WIRED connection to the network switch.	1 Gbps Full Duplex WIRED connection to the network switch.
	Strongly Recommended: All machines with VTS Software installed should be in the same domain or workgroup, VLAN, and subnet.	
	 Warning: Wireless networks are strictly prohibited. 3G/4G/5G connections are prohibited.	
Internet connection	See Internet bandwidth requirements above.	
Internet browser	Latest version of Edge, Chrome, or Firefox	
Printer	600 DPI Laser Printer	
Additional software	.NET 4.0 is installed with the VTS software.	
	If installing on Windows 10 , .NET 3.5 must be enabled on exam delivery workstation to complete the VTS installation.	
	All workstations must have Anti-Virus software installed with a current update.	
Additional notes	The Windows account used to install the VUE Testing System Platform must have Administrative rights to install properly.	
	The Windows account profile logged into the exam delivery workstation must have Administrative rights to launch the Delivery Manager software.	
	If there is an approved accommodation for Assistive Technology (such as JAWS software) the exam delivery workstation requires more advanced technical requirements, such as 16 GBs of RAM . A Pearson representative will confirm with test center staff prior to scheduling this type of Assistive Technology.	


Government Center PVTC Technical Requirements

Server: file storage


The file storage server must be accessible to the Administration workstation, Proctor workstation, and all exam delivery workstations. These requirements apply to Administration workstations with 9 – 15 exam delivery workstations, and to Servers with 15 – 30 exam delivery workstations.

	REQUIRED FOR 9 – 15 EXAM DELIVERY SEATS	REQUIRED FOR 15 – 30 EXAM DELIVERY SEATS
Operating System	<p>*Windows 10 Professional or Enterprise (64-bit mandatory)</p> <p>*Windows 11 Professional or Enterprise 10th generation or higher (64-bit mandatory)</p> <p>Windows Server 2019 (64-bit)</p> <p>Windows Server 2016 (64-bit)</p>	<p>Windows Server 2019 (64-bit)</p> <p>Windows Server 2016 (64-bit)</p>
	<p>(Windows Server Core is not currently supported)</p> <p>*If you are using Windows 10 or 11, you must have the latest version OS with all patches installed. You should run monthly updates for any OS updates.</p> <p>**Windows 10 support ends October 2025.</p>	
	<div style="display: flex; align-items: center;">  <p>Note: If you are an educational facility, i.e., University, Windows 10 education is currently supported.</p> </div>	
Processor	<p>Intel: i5 Generation 4 or higher i3 Generation 8 or higher</p> <p>AMD: Ryzen 3 Generation 5 or higher</p>	<p>Intel: i7 Generation 2 or higher</p> <p>AMD: Ryzen 5 or higher</p>
	<p>*Please refer to the Microsoft website to ensure the i5/i7 or Ryzen 3/5 processor is compatible with Windows 11.</p>	
RAM	8 GB of RAM or more.	16 GB of RAM or more.
Hard drive	<p>SATA II Interface Standard or faster Interface Standard.</p> <p>128 GB available disk space.</p>	

Government Center PVTC Technical Requirements

	REQUIRED FOR 9 – 15 EXAM DELIVERY SEATS	REQUIRED FOR 15 – 30 EXAM DELIVERY SEATS
Network	100 Mbps Full Duplex WIRED connection to the network switch.	1 Gbps Full Duplex WIRED connection to the network switch.
	<p>Pearson VUE strongly recommends that the server be dedicated to the VTS software, to ensure the highest quality experience for candidates during exam delivery.</p> <p>Pearson VUE strongly discourages that the server provides additional services such as: domain controller, DHCP, SQL Server, WINS, etc.</p>	
	 <p>Warning: Wireless networks are strictly prohibited. 3G/4G/5G connections are prohibited.</p>	
Power	UPS is recommended.	
Internet connection	See Internet bandwidth requirements above.	
Internet browser	Latest version of Edge, Chrome, or Firefox	
Additional software	<p>Server must have Anti-Virus software installed with a current update.</p> <p>.NET 3.5 framework must be enabled.</p>	
Additional notes	<p>The Windows account used to install the VUE Testing System Platform must have Administrative rights to install properly.</p> <p>Candidates should never have free access to the Server machine at any time.</p>	

Prohibited on all workstations and servers

EXAM DELIVERY WORKSTATIONS	
Portable computers	<p>Smartphones are strictly prohibited.</p> <p>Tablet devices are strictly prohibited (e.g., iOS, Android, and Windows 8).</p> <p>Netbooks and Chromebooks are strictly prohibited.</p>
	 <p>Warning: Laptops are strictly prohibited as exam delivery workstations or as Servers.</p>
	<p>Processor</p> <p>Devices running Ultra Mobile Processors are strictly prohibited. This includes, but is not limited to Intel Atom, AMD NEO CPU lines, and ARM CPUs.</p>

Government Center PVTC Technical Requirements

EXAM DELIVERY WORKSTATIONS	
RAM	Less than 8 GB on any workstation
Hard drive	FAT32 File System
Operating System	<ul style="list-style-type: none"> • Evaluation versions of operating systems are not allowed • Windows XP, Vista & Windows 7/8/8.1 (all versions) are strictly prohibited • Windows Server 2008 (all versions) • Windows Server 2012 (all versions) • Windows Server Operating System strictly prohibited on the exam delivery workstations and not supported on Administration workstations • Virtual environments are strictly prohibited (e.g., VMWare, Virtual PC, Citrix, Parallels, VirtualBox, etc.) • Mac OSX is strictly prohibited • Mac hardware running any Operating System is strictly prohibited • All Linux/Unix based Operating Systems are strictly prohibited
Graphics adapter	Any Graphics Adapter that does not support DirectX 12 or later with WDDM 2.0 driver or higher.
Monitor display	<p>Monitors smaller than 24" are strictly prohibited on exam delivery workstations.</p> <p>Dual monitors are strictly prohibited on exam delivery workstations.</p> <p>KVM switches are strictly prohibited on exam delivery workstations.</p> <hr/> <p>Touch Screen monitors must be disabled on all workstations.</p>
USB	<p>Portable computing devices such as, but not limited to, smartphones and tablets are strictly prohibited from being connected to the exam delivery workstation during exam deliveries.</p> <hr/> <p>USB Hubs are strictly prohibited on exam delivery workstations.</p>
Network	<p>Wireless Networks of any kind are strictly prohibited.</p> <p>IPv6 is not currently supported.</p> <p>Novell Netware is not supported.</p> <p>Network Hubs are strictly prohibited.</p>
Internet connection	SSL VPNs are strictly prohibited. (e.g., Hotspot Shield)
Additional software	Software that can be used to remotely access the delivery workstations during exam delivery is strictly prohibited.
Additional notes	It is strictly prohibited to install the VUE Testing System Platform on any computer that does not have Anti-Virus software installed on it.